

**WECO**[®]

Ceramic Terminal Blocks

and Mantle Terminals for Harsh Environments

WECO's Ceramic series of high-performance design delivers outstanding reliability and durability in high temperatures, humidity and corrosive environments.

Industrial or commercial high temperature environments require process equipment specially designed for such harsh conditions. Powering those systems requires materials which will not only safely sustain such high temperatures and humidity but will often have to do so in the presence of open flame or corrosive contaminants. WECO Ceramic series of terminal blocks and mantle terminals provides that high temperature and harsh environment certification your design requires, while ensuring safety and reliability.

With almost 100 years of experience in the world of connectors, WECO is an engineering-based company specialized in developing and providing optimized electrical solutions for the HVAC, electrical energy, industrial, fire & security and electronic markets.

Need special configuration or specific engineering assistance? Contact us at wecoconnectors.com

UNPARALLED RATINGS

- Extended temperatures ratings (heat, flame and corrosion resistant)
- Zero water absorption ratings
- Qualified for all applicable environmental conditions
- Compliant with all regulatory requirements

VERSATILE DESIGN

- Ideal for harsh environments (Heat, Humidity, Corrosion and UV)
- Robust, durable and power isolation optimized technology
- Easy and safe connection
- Suitable to supply power via panel or chassis mount
- Optional explosion-proof on some models

SPECIALTY APPLICATIONS

- Heat, flame and corrosion resistant applications: Furnaces and heaters, chemical plants and storage, boiler house, steam plant
- Demanding conditions power applications: Process equipment, machinery and motors used in the heavy industry

ADAPTABILITY.
RELIABILITY.
PERFORMANCE.





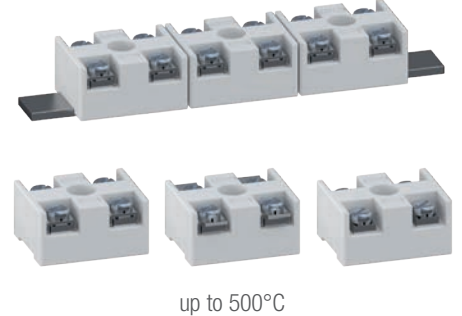
Designing for a challenging environment application?

WECO's power ceramic terminal blocks and mantle terminals will deliver power your design requires while withstanding high temperatures and harsh environments they are exposed to. Benefit from the configurable ceramic strips to power equipment.

CERAMIC TERMINAL BLOCK



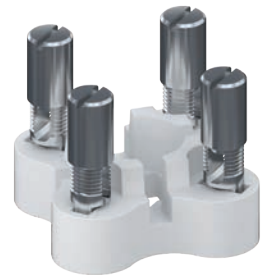
RAIL MOUNTED CONNECTORS



MOTOR JUNCTION BOX



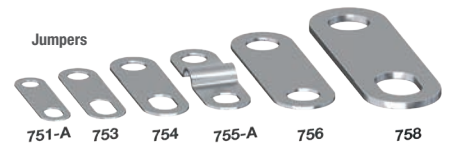
MARINE CONNECTORS



MANTLE TERMINAL FOR HAZARDOUS CONDITIONS



ACCESSORIES



Superior power ratings

Ideal for harsh environments

Safe & Simple

Customizable Solutions

WANT TO DELIVER A TOP-OF-THE-LINE INDUSTRIAL AUTOMATION PROJECT AT OPTIMIZED COSTS?

WECO's reliable and durable product offered at minimal costs as well as its safety standards makes us the best partner for the implementation of your industrial projects. WECO's Ceramic Series offers:

- Superior materials
- Outstanding field reliability and durability
- Competitive cost
- Solid or stranded wire ranging from 2 to 26AWG
- Current rating up to 160 amp
- Voltage rating up to 600V
- Screw: zinc plated steel standard; nickel plated brass or stainless steel optional

wecoconnectors.com



© Copyright 2020 by WECO. WECO® is a registered Trademark. Information provided in this document may be changed without prior notice. Ceramic Terminal Blocks | EN-NA | R2.09.2020